



# *Swami Vivekananda* *Government Model School*

Session  
2025-26





उत्तिष्ठत  
जाग्रत  
प्राप्य  
वरान्निबोधत।

उठो, जागो और ध्येय  
की प्राप्ति तक रूको मत ।

"Arise, awake and stop not  
until the goal is achieved."

- Swami Vivekananda

# APRIL 2025

**Holidays will be according to SHIVIRA Calendar and  
Govt. of Rajasthan Calendar**

## CELEBRATIONS

- WELCOME AND BEGINNING OF NEW SESSION
- WORLD HEALTH DAY 7<sup>TH</sup> APRIL.
- WORLD HERITAGE DAY 18<sup>TH</sup> APRIL.
- NATIONAL CIVIL SERVICE DAY 21<sup>ST</sup> APRIL.
- INTERNATIONAL EARTH DAY 22<sup>ND</sup> APRIL.
- NATIONAL PANCHAYATI DAY 24<sup>TH</sup> APRIL.

## OFFICE WORK

- UPDATION OF SCHOLAR REGISTER AND STUDENT PROFILE.
- FEE COLLECTION FOR CLICK SCHEME.
- STARTING OF COMPUTER CLASSES UNDER CLICK SCHEME.
- WRITING OF ACRs OF THE STAFF.
- COMPLETION OF SERVICE RECORDS.
- OPERATIONALISING HOUSE SYSTEM.
- RESULT ANALYSIS NON-BOARD CLASSES AND TEACHERS MEETING (3<sup>RD</sup> SATURDAY).
- DISTRIBUTION OF FREE TEXT BOOKS.
- TERM WISE SYLLABUS DISTRIBUTION PLAN 1<sup>ST</sup> WEEK.
- HOUSE INSPECTION INCLUDING UNIFORM AND RECORD MAINTENANCE.
- ADMISSION PROCESS OF 6<sup>TH</sup> TO 10<sup>TH</sup> CLASSES.
- CONDUCT OF SMC/SDMC MEETING ON AMAVASYA.
- FINALIZATION OF INCOME TAX AND ISSUE FORM-16.
- STOCK VERIFICATION 1<sup>ST</sup> WEEK OF APRIL 2025.
- **APPLY FOR EXTENSION OF CBSE AFFILIATION. (IMPORTANT)**

## ACTIVITIES

- FRESHERS MEET
- CAREER COUNSELLING AND GUIDANCE BY A CAREER COUNSELLOR.
- INTER HOUSE CHESS, KHO-KHO, VOLLEYBALL, BASKETBALL & KABADDI TOURNAMENT.
- LITERARY ACTIVITY (POEM RECITATION, SHLOKAS, SOLO SONG).
- PARIWAR SAKSHARTA SHAPATH.
- PHOTOGRAPHY ACTIVITY.

## GENERAL INSTRUCTIONS FOR ENTIRE SESSION

- MAJOR EXPOSURE VISIT (ONE) INTERSTATE/INTRASTATE (1200KMS MAXIMUM, PLAN ONLY IN SUMMER/ WINTER/DEEPAWALI VACATIONS/IN CONTINUOUS 3-4 DAYS HOLIDAYS.)
  - SDMC PLANNING
  - LOCAL EXPOSURE VISIT (THREE)
  - SUBJECT WISE MONTHLY ASSESSMENT OF STUDENTS THROUGH WRITTEN TEST (LAST TWO WORKING DAYS OF EACH MONTH)
  - CELEBRATIONS OF THE DAYS ARE SUGGESTIVE. PRINCIPALS ARE ADVISED TO CELEBRATE AT LEAST 2 EVENTS EVERY MONTH DOCUMENTATION OF EVERY ACTIVITY / CELEBRATION IS NEEDED.
  - STAFF MEETING MUST BE TAKEN ONCE IN A WEEK. RECORD TO BE MAINTAINED PROCEEDING OF STAFF MEETINGS DESIRABLE FOR MANAGEMENT PURPOSE.
  - ENSURE ATTENDANCE ON BIOMETRIC MACHINE/SHALADARPAN.
- ALL CBSE RELATED CIRCULARS MUST BE FOLLOWED AS PER THE CBSE DIRECTIVES.**

# 4

**For STAFF**

**07:30 AM to 03:30 PM**

## SCHOOL TIMINGS

**Class 1 to 5**

**08:00 AM to 01:30 PM**

**Class 6 to 12**

**08:00 AM to 02:30 PM**





# Swami Vivekanand

Government Model School

APRIL 2025





# MAY 2025

S	M	T	W	T	F	S
				1	2	3
4	5	6	7	8	9	10
11	12	13	14	15	16	17
18	19	20	21	22	23	24
25	26	27	28	29	30	31

## 5

**For STAFF**

**07:30 AM to 03:30 PM**

### SCHOOL TIMINGS

**Class 1 to 5**

**08:00 AM to 01:30 PM**

**Class 6 to 12**

**08:00 AM to 02:30 PM**

**Holidays will be according to SHIVIRA Calendar and  
Govt. of Rajasthan Calendar**

### CELEBRATIONS

- INTERNATIONAL LABOUR DAY 1<sup>ST</sup> MAY.
- WORLD PRESS FREEDOM DAY 3<sup>RD</sup> MAY.
- RABINDRANATH TAGORE JAYANTI 7<sup>TH</sup> MAY.
- WORLD RED CROSS DAY, MOTHERS' DAY 8<sup>TH</sup> MAY.
- NATIONAL TECHNOLOGY DAY 11<sup>TH</sup> MAY.
- NATIONAL SOLIDARITY DAY 13<sup>TH</sup> MAY.
- MAHARANA PRATAP JAYANTI 29<sup>TH</sup> MAY.
- WORLD NO TOBACCO DAY 31<sup>ST</sup> MAY.

### OFFICE WORK

- COLLECTION OF MATERIAL FOR VIDYALAYA PATRIKA "PRAVAAH".
- PLANNING FOR HOBBY CLASSES IN SUMMER VACATIONS.
- PTA AND SDMC/SMC MEETING ON AMAVASYA.
- GENDER CELL (GARIMA) MEETING 2<sup>ND</sup> WEEK.
- ASSIGNMENTS FOR VACATION TO THE STUDENTS.

### ACTIVITIES

- INTER HOUSE FOOTBALL, HANDBALL, ATHLETICS, AND HOCKEY TOURNAMENT.
- LITERARY ACTIVITY (ESSAY WRITING COMPETITION).
- CARD MAKING COMPETITION.
- INTER HOUSE SOCIAL SCIENCE SLOGAN WRITING COMPETITION.
- INTER HOUSE REASONING COMPETITION.

### GENERAL INSTRUCTIONS FOR ENTIRE SESSION

- CHECK AND SIGN THE DAILY ATTENDANCE REGISTER.
- CHECK LATE COMERS AMONG STAFF AND STUDENTS.
- ENSURE SMOOTH CONDUCT OF MORNING ASSEMBLY.
- SUPERVISION OF: (A) CLEANLINESS, TOILETS, DRINKING WATER SYSTEM, LABS, LIBRARY, AND FIELD ACTIVITIES, FIRE SAFETY AUDIT.
- (B) CLASS ROOM TEACHING.
- (C) QUALITY CHECK OF MDM.
- IMPLEMENT & MONITOR VARIOUS ACTIVITIES, POLICIES & PROGRAMME OF MODEL SCHOOL.
- PRINCIPAL'S DIARY/TEACHER DIARY.
- ATTEND PARENTS AND VISITORS, SOLUTION OF PROBLEMS OF STAFF & STUDENTS.
- ADDRESS STUDENTS IN THE MORNING ASSEMBLY.
- FINANCIAL MATTERS. 1. CHECKING OF CASH BOOKS FUND.
- 2. REGULAR MAINTENANCE OF LEDGERS OF FUND.
- CLASS ROOM (TEACHING LEARNING) OBSERVATION.
- UPDATATION OF SHALA-DARPAN & WEBSITE REGULARLY.

**ALL CBSE RELATED CIRCULARS MUST BE FOLLOWED AS PER THE CBSE DIRECTIVES.**



# Swami Vivekanand

Government Model School

MAY 2025





# JUNE 2025

**Holidays will be according to SHIVIRA Calendar and Govt. of Rajasthan Calendar**

## **CELEBRATIONS**

- WORLD ENVIRONMENT DAY 5<sup>TH</sup> JUNE.
- INTERNATIONAL YOGA DAY 21<sup>ST</sup> JUNE.
- BHAMASHAH JAYANTI AND ALUMNI MEET 28TH JUNE.

## **OFFICE WORK**

- ACADEMIC PLANNING OF SCHOOL TO BE EXECUTED AFTER VACATION.
- SAFETY CERTIFICATION OF BUILDING.
- STAFF CAPACITY BUILDING PROGRAMME.
- PLANNING FOR MAINTENANCE OF REPAIR WORKS OF BUILDING, FURNITURE, COMPUTERS, K-YAN, ATL LAB, ROBOTICS LAB, SCIENCE LABS ETC.

## **ACTIVITIES**

- HOBBY CLASSES DURING VACATIONS.
- BAND TRAINING DURING VACATIONS.
- SPOKEN ENGLISH CLASSES DURING VACATIONS.

## **GENERAL INSTRUCTIONS FOR ENTIRE SESSION**

- MONTH –WISE CHECK POINTS. TO BE SENT BEFORE 7<sup>TH</sup> OF EVERY MONTH.
- INTER CLASS DISPLAY BULLETIN BOARD COMPETITION LAST WORKING DAY OF EVERY MONTH.
- MIS REPORT.
- FUND REQUISITION/CONFIRM SALARY RECEIPT(BEFORE 3<sup>RD</sup> OF EVERY MONTH)
- MONTHLY STATEMENT OF SCHOOL FUNDS.
- ENROLLMENT POSITION.
- CONDUCT FACULTY AND STAFF MEETING.
- UPDATION OF SCHOOL WEBSITE AND SHALADARPAN.
- DISBURSEMENT OF SALARY(REGULARISE PERIODS OF LEAVE/ABSENT OF STAFF UPLOAD BY 20TH)

**ALL CBSE RELATED CIRCULARS MUST BE FOLLOWED AS PER THE CBSE DIRECTIVES.**

# 6

**For STAFF**

**07:30 AM to 03:30 PM**

## **SCHOOL TIMINGS**

**Class 1 to 5**

**08:00 AM to 01:30 PM**

**Class 6 to 12**

**08:00 AM to 02:30 PM**



# Swami Vivekanand

Government Model School

JUNE 2025





# JULY 2025

Holidays will be according to **SHIVIRA Calendar** and **Govt. of Rajasthan Calendar**

## CELEBRATIONS

- VAN MAHOTSAV 1<sup>ST</sup> WEEK OF JULY.
- GURU POORNIMA 10<sup>TH</sup> JULY (THURSDAY)
- WORLD POPULATION DAY 11<sup>TH</sup> JULY.
- WORLD YOUTH SKILLS DAY 15<sup>TH</sup> JULY.
- KARGIL VICTORY DAY 26<sup>TH</sup> JULY.
- WORLD NATURE CONSERVATION DAY 28<sup>TH</sup> JULY.
- PLANTATION WEEK.

## OFFICE WORK

- OASIS SUBMISSION
- PUBLICATION OF VIDYALAYA PATRIKA "PRAVAAH"
- SHALA DARPAN/SCHOOL WEBSITE UPDATION AS PER CBSE RULES.
- ADMISSION PROCESS OF CLASS 11TH.

## ACTIVITIES

- CONSTITUTION OF BAL SANSAD.
- INVESTITURE CEREMONY 4<sup>TH</sup> WEEK (STUDENT COUNCIL-HEAD BOY AND HEAD GIRL)
- INTER HOUSE YOGA COMPETITION 3<sup>RD</sup> SATURDAY.
- INTER HOUSE CHESS, CRICKET, CAROM, YOGA, TABLE TENNIS 4<sup>TH</sup> SATURDAY.
- INTER HOUSE POSTER DRAFTING, CALLIGRAPHY 3<sup>RD</sup> WEEK.
- SCHOOL BAND REHEARSAL.
- PTA MEETING ON AMAVASYA.
- SCHOOL LEVEL DRAWING AND PAINTING AND ART AND CRAFT COMPETITION 3<sup>RD</sup> WEEK.
- CLUSTER LEVEL DRAWING & PAINTING AND ART & CRAFT COMPETITION 4<sup>TH</sup> WEEK.
- 1<sup>ST</sup> PERIODIC ASSESSMENT 4<sup>TH</sup> WEEK OF JULY.

## EXAMINATION SCHEDULE SESSION 2025-26.

Sr. No.	Tentative Month	Class 1-8	Class 9-10	Class 11-12
1.	4th Week of July 2025	Periodic Assessment-1	Periodic Test-1	Periodic Test-1
2.	1st Week of October 2025	Half Yearly	Periodic	Half Yearly Test-2
3.	2nd Week of January 2026	Periodic Assessment-2	Periodic Test-3	Periodic Test-2
4.	2nd & 3rd Week of March 2026	Annual Exam.	Annual Exam.	Annual Exam.

- SYLLABUS OF TERM 1 MUST BE COMPLETED BY SEPTEMBER MONTH.
- SYLLABUS OF TERM 2 MUST BE COMPLETED BY FEBRUARY MONTH.
- SYLLABUS FOR BOARD CLASSES MUST BE COMPLETED BY DECEMBER MONTH.

All CBSE Related Circulars Must be followed as per the CBSE Directives.

S	M	T	W	T	F	S
		1	2	3	4	5
6	7	8	9	10	11	12
13	14	15	16	17	18	19
20	21	22	23	24	25	26
27	28	29	30	31		

# 7

## SCHOOL TIMINGS

For **STAFF**

07:30 AM to 03:30 PM

**Class 1 to 5**

08:00 AM to 01:30 PM

**Class 6 to 12**

08:00 AM to 02:30 PM



JULY 2025

# Swami Vivekanand

## Government Model School

### GENERAL INSTRUCTION

#### DURATION

30 MINUTES  
30 MINUTES  
40 MINUTES  
40 MINUTES  
10 MINUTES  
40 MINUTES  
40 MINUTES  
30 MINUTES  
40 MINUTES  
40 MINUTES  
10 MINUTES  
35 MINUTES  
35 MINUTES  
60 MINUTES

#### NAME OF ACTIVITY

STAFF ASSIGNMENT  
MORNING ASSEMBLY  
1<sup>ST</sup> PERIOD  
2<sup>ND</sup> PERIOD  
MINI BREAK  
3<sup>RD</sup> PERIOD  
4<sup>TH</sup> PERIOD  
LUNCH BREAK  
5<sup>TH</sup> PERIOD  
6<sup>TH</sup> PERIOD  
MINI BREAK  
7<sup>TH</sup> PERIOD  
8<sup>TH</sup> PERIOD  
REMEDIAL TEACHING, LESSON PLANNING, CONTACT WITH PARENTS REPRESENTATION OF TEACHING SKILLS, HOMEWORK CHECKING, INVOLVEMENT OF STUDENTS/TEACHER IN ICT LAB, SPOKEN ENGLISH PROFICIENCY ENHANCEMENT ACTIVITIES.





# AUGUST 2025

**Holidays will be according to SHIVIRA Calendar and  
Govt. of Rajasthan Calendar**

## CELEBRATIONS

- WORLD TRIBAL DAY 9<sup>TH</sup> AUGUST.
- QUIT INDIA MOVEMENT DAY 9<sup>TH</sup> AUGUST.
- INTERNATIONAL YOUTH DAY 12<sup>TH</sup> AUGUST.
- INDEPENDENCE DAY 15<sup>TH</sup> AUGUST.
- NATIONAL GAMES DAY 29<sup>TH</sup> AUGUST.

## OFFICE WORK

- SDMC, SMC, PTA MEETING 15<sup>TH</sup> AUGUST.
- MEDICAL CHECKUP, HEALTH CARDS.
- SCHOLARSHIP FORMS INVITATION.
- TEACHER TUNING WITH OTHER SCHOOLS (KV/NAVODAY/GOOD CBSE SCHOOLS).
- SUBMISSION OF OASIS DATA, HPE PORTAL UPDATION.
- REGISTRATION OF CLASS IX & XI AND LOC FOR CLASS 10<sup>TH</sup> AND 12<sup>TH</sup> ON CBSE PORTAL.

## ACTIVITIES

- CAREER COUNSELLING AND GUIDANCE BY CAREER COUNSELLOR.
- FIRST EXPOSURE CUM EXCURSION VISIT (LOCAL)
- INTER HOUSE LAWN TENNIS, BADMINTON AND RURAL GAMES 1<sup>ST</sup> SATURDAY.
- INTER HOUSE QUIZ COMPETITION (MATH, SCIENCE, G.K., ENGLISH, HINDI ETC.) 4<sup>TH</sup> SATURDAY.
- INTER HOUSE DANCE COMPETITION 4<sup>TH</sup> SATURDAY.
- INTER HOUSE SPORTS QUIZ 4<sup>TH</sup> SATURDAY.
- RURAL IT QUIZ PREPARATION.
- RAKHI MAKING COMPETITION 8<sup>TH</sup> AUGUST.
- SCHOOL LEVEL SCIENCE FAIR 4<sup>TH</sup> WEEK.
- STATE LEVEL DRAWING-PAINTING AND ART & CRAFT COMPETITION 1<sup>ST</sup> WEEK AT TALERA (BUNDI) CLUSTER 1

## GENERAL INSTRUCTIONS FOR ENTIRE SESSION

FOUR VISITS ARE TO BE DONE IN EACH SESSION.

- SOCIAL SECTOR: VISIT TO INSTITUTES SUCH AS OLD AGE HOME, SPECIAL INSTITUTES FOR CWSN, LEPROSY CENTERS, HOSPITALS, ETC. IN 1<sup>ST</sup> QUARTER (IN MONTH OF JULY)
- SCIENCE AND TECHNOLOGY: LOCAL INDUSTRIES, SCIENCE PARK, TECHNICAL INSTITUTES, DAIRY PLANT, ETC. IN 2<sup>ND</sup> QUARTER (IN MONTH OF OCTOBER)
- HISTORICAL AND ENVIRONMENT: HISTORICAL MOVEMENTS, ECO-PARKS, FOREST AREA, BOTANICAL GARDENS, SANCTUARIES, BIRD WATCHING POINTS, ZOO, ETC. IN 3<sup>RD</sup> QUARTER (IN MONTH OF JANUARY)
- VISIT TO REPUTED SCHOOL/INSTITUTION (IIT, IIM, MEDICAL COLLEGE ETC.) ONCE IN A YEAR.
- ADVENTURES ACTIVITIES, SCOUT GUIDE, SPORTS TOURNAMENTS, SCIENCE EXHIBITIONS & FAIRS ARE ALSO INCORPORATED IN THE ACADEMIC CALENDAR.

**ALL CBSE RELATED CIRCULARS MUST BE FOLLOWED AS PER THE CBSE DIRECTIVES.**

# 8

**For STAFF**

**07:30 AM to 03:30 PM**

## SCHOOL TIMINGS

**Class 1 to 5**

**08:00 AM to 01:30 PM**

**Class 6 to 12**

**08:00 AM to 02:30 PM**



# Swami Vivekanand

Government Model School

AUGUST 2025





# SEPTEMBER 2025

S	M	T	W	T	F	S
	1	2	3	4	5	6
7	8	9	10	11	12	13
14	15	16	17	18	19	20
21	22	23	24	25	26	27
28	29	30				

# 9

**For STAFF**

**07:30 AM to 03:30 PM**

## SCHOOL TIMINGS

**Class 1 to 5**

**08:00 AM to 01:30 PM**

**Class 6 to 12**

**08:00 AM to 02:30 PM**

**Holidays will be according to SHIVIRA Calendar and Govt. of Rajasthan Calendar**

### CELEBRATIONS

- TEACHER'S DAY 5<sup>TH</sup> SEPTEMBER.
- INTERNATIONAL LITERACY DAY 8<sup>TH</sup> SEPTEMBER.
- HINDI DIWAS 14<sup>TH</sup> SEPTEMBER (14 TO 28 SEPTEMBER HINDI PAKHWARA)
- WORLD FIRST AID DAY 13<sup>TH</sup> SEPTEMBER.
- INTERNATIONAL DAY OF DEMOCRACY 15<sup>TH</sup> SEPTEMBER.
- WORLD OZONE DAY 16<sup>TH</sup> SEPTEMBER.
- INTERNATIONAL DAY OF PEACE 21<sup>ST</sup> SEPTEMBER.

### OFFICE WORK

- PTA, SMC, SDMC MEETING ON AMAVASYA.
- SUBMISSION OF OASIS DATA, HPE PORTAL UPDATION.
- REGISTRATION OF CLASS IX & XI AND LOC FOR CLASS 10TH AND 12<sup>TH</sup> ON CBSE PORTAL.

### ACTIVITIES.

- CLUSTER LEVEL SCIENCE FAIR 1<sup>ST</sup> WEEK.
- STATE LEVEL SCIENCE FAIR 2<sup>ND</sup> WEEK AT GHATOL (BANSWARA) CLUSTER 3
- INTERHOUSE FUN GAMES 3<sup>RD</sup> SATURDAY.
- SECOND EXCURSION CUM EXPOSURE VISIT LOCAL.
- SCHOOL LEVEL SOCIAL SCIENCE EXHIBITION 4<sup>TH</sup> WEEK.

### GENERAL INSTRUCTIONS FOR ENTIRE SESSION

- TO PREPARE COMPREHENSIVE SCHEDULE/PLANS FOR THE ENTIRE SESSION.
- SDMC MEETINGS.
- NOTEBOOK CHECKING.
- SCOUTS AND GUIDES ACTIVITIES.
- PLANNING FOR LOW ACHIEVERS AND BRIGHT STUDENTS.
- CCA & SPORTS ACTIVITIES.
- MEDICAL CHECK UP.
- ENSURE FIRE SAFETY AND BASIC AMENITIES & CLEANLINESS(SWACHCHHATA).

**ALL CBSE RELATED CIRCULARS MUST BE FOLLOWED AS PER THE CBSE DIRECTIVES.**

### Time Table

IN WINTER	IN SUMMER	DURATION	NAME OF ACTIVITY
08.30 To 09.00 AM	07.30 To 08.00 AM	30 Minutes	Staff Assignment
09.00 To 09.30 AM	08.00 To 08.30 AM	30 Minutes	Morning Assembly
09.30 To 10.10 AM	08.30 To 09.10 AM	40 Minutes	1st Period
10.10 To 10.50 AM	09.10 To 09.50 AM	40 Minutes	2nd Period
10.50 To 11.00 AM	09.50 To 10.00 AM	10 Minutes	Mini Break
11.00 To 11.40 AM	10.00 To 10.40 AM	40 Minutes	3rd Period
11.40 To 12.20 PM	10.40 To 11.20 AM	40 Minutes	4th Period
12.20 To 12.50 PM	11.20 To 11.50 AM	30 Minutes	Lunch Break
12.50 To 01.30 PM	11.50 To 12.30 PM	40 Minutes	5th Period
01.30 To 02.10 PM	12.30 To 01.10 PM	40 Minutes	6th Period
02.10 To 02.20 PM	01.10 To 01.20 PM	10 Minutes	Mini Break
02.20 To 02.55 PM	01.20 To 01.55 PM	35 Minutes	7th Period
02.55 To 03.30 PM	01.55 To 02.30 PM	35 Minutes	8th Period
03.30 To 04.30 PM	02.30 To 03.30 PM	60 Minutes	Remedial Teaching, Lesson Planning, contact with parents Representation of teaching skills, home work checking, Involvement of students/ teachers in ICT Labs, spoken English proficiency, enhancement activities, completion of charge work, updating of student portfolio



# Swami Vivekanand

Government Model School

SEPTEMBER 2025





# OCTOBER 2025

Holidays will be according to SHIVIRA Calendar and  
Govt. of Rajasthan Calendar

## CELEBRATIONS.

- VIGILANCE WEEK
- INTERNATIONAL NON-VIOLENCE DAY/GANDHI JAYANTI, SHASTRI JAYANTI 2<sup>ND</sup> OCTOBER.
- WORLD TEACHER'S DAY 5<sup>TH</sup> OCTOBER.
- INTERNATIONAL GIRL CHILD DAY 11<sup>TH</sup> OCTOBER.
- WORLD STUDENT'S DAY (DR. APJ ABUL KALAM'S BIRTH DAY) 15<sup>TH</sup> OCTOBER.
- UNITED NATIONS DAY 24<sup>TH</sup> OCTOBER.
- DIWALI CELEBRATION ON THE EVE OF DIWALI BREAK.

## OFFICE WORK

- PTA, SMC, SDMC MEETING ON AMAVASYA.
- SUBMISSION OF OASIS DATA, HPE PORTAL UPDATION.
- REGISTRATION OF CLASS IX & XI AND LOC FOR CLASS 10<sup>TH</sup> AND 12<sup>TH</sup> ON CBSE PORTAL.

## ACTIVITIES

- 2<sup>ND</sup> PERIODIC TEST/ASSESSMENT/HALF YEARLY/TERM-1 EXAM. 1<sup>ST</sup> WEEK.
- CLUSTER LEVEL SOCIAL SCIENCE EXHIBITION 4<sup>TH</sup> WEEK.
- STATE LEVEL SOCIAL SCIENCE EXHIBITION 4<sup>TH</sup> WEEK AT RANI (PALI) CLUSTER 12
- CAREER COUNSELLING AND GUIDANCE BY A CAREER COUNSELLOR.
- INTER HOUSE RANGOLI AND MEHANDI COMPETITION 3RD SATURDAY.

**ALL CBSE RELATED CIRCULARS MUST BE FOLLOWED AS PER THE CBSE DIRECTIVES.**



# 10

**For STAFF**

**08:30 AM to 04:30 PM**

## SCHOOL TIMINGS

**Class 1 to 5**

**09:00 AM to 02:30 PM**

**Class 6 to 12**

**09:00 AM to 03:30 PM**



# Swami Vivekanand

Government Model School

OCTOBER 2025





# NOVEMBER 2025

Holidays will be according to SHIVIRA Calendar and Govt. of Rajasthan Calendar

## CELEBRATIONS

- GURU NANAK JAYANTI 05<sup>TH</sup> NOVEMBER
- RASHTRIYA SHIKSHA DIWAS, MAULANA AZAD JANM DIWAS 11<sup>TH</sup> NOVEMBER.
- BAL DIWAS 14<sup>TH</sup> NOVEMBER.
- U.N.O. BAL ADHIKAR DIWAS 18<sup>TH</sup> NOVEMBER.
- Smt. INDIRA GANDHI JAYANTI (EKTA DIWAS) 19<sup>TH</sup> NOVEMBER
- DAY FOR ELIMINATION OF VIOLENCE AGAINST WOMEN 25<sup>TH</sup> NOVEMBER.
- CONSTITUTION DAY, NCC DAY 26<sup>TH</sup> NOVEMBER.

## OFFICE WORK

- REVIEW FIRE SAFETY AND PROVISIONS OF OTHER BASIC AMENITIES.
- TEACHER'S TUNING WITH OTHER SCHOOLS (KV/NAVODAYA/GOOD CBSE SCHOOLS)
- PTA, SMC, SDMC MEETING ON AMAVASYA.

## ACTIVITIES

- SCHOOL LEVEL EXTEMPORE (ENGLISH & HINDI) 1<sup>ST</sup> WEEK.
- CLUSTER LEVEL EXTEMPORE ENGLISH AND HINDI 2<sup>ND</sup> WEEK.
- STATE LEVEL EXTEMPORE (ENGLISH & HINDI) 3<sup>RD</sup> WEEK AT DAUSA (DAUSA) CLUSTER 8
- INTER HOUSE COMPETITION, ARCHERY, BOXING, WRESTLING COMPETITION.
- INTER HOUSE MIME, MONO ACTING COMPETITION.
- BAL MELA CELEBRATION, INTER HOUSE FANCY DRESS COMPETITION 3<sup>RD</sup> WEEK.
- SCHOOL BAND REHEARSAL.

ALL CBSE RELATED CIRCULARS MUST BE FOLLOWED AS PER THE CBSE DIRECTIVES.



# 11

For **STAFF**

08:30 AM to 04:30 PM

## SCHOOL TIMINGS

**Class 1 to 5**

09:00 AM to 02:30 PM

**Class 6 to 12**

09:00 AM to 03:30 PM



# Swami Vivekanand

Government Model School

NOVEMBER 2025





# DECEMBER 2025

Holidays will be according to SHIVIRA Calendar and Govt. of Rajasthan Calendar

## CELEBRATIONS

- WORLD AIDS DAY 1<sup>ST</sup> DECEMBER.
- WORLD DISABLED DAY 3<sup>RD</sup> DECEMBER
- ARMED FORCES FLAG DAY 7<sup>TH</sup> DECEMBER.
- UNICEF DAY 8<sup>TH</sup> DECEMBER.
- HUMAN RIGHTS DAY 10<sup>TH</sup> DECEMBER.
- WORLD ENERGY CONSERVATION DAY 14<sup>TH</sup> DECEMBER.
- VIJAY DIWAS 16<sup>TH</sup> DECEMBER.
- NATIONAL MATHEMATICS DAY 22<sup>ND</sup> DECEMBER.
- KISAN DIWAS 23<sup>RD</sup> DECEMBER.
- NATIONAL CONSUMER'S DAY 24<sup>TH</sup> DECEMBER
- GOOD GOVERNANCE DAY, CHRISTMAS DAY 25<sup>TH</sup> DECEMBER.
- VEER BAL DIWAS 26<sup>TH</sup> DECEMBER

## OFFICE WORK

- PTA, SMC, SDMC MEETING ON AMAVASYA.
- ACR SUBMISSION OF MINISTRIAL STAFF.

## ACTIVITIES

- SCHOOL LEVEL MATH OLYMPIAD 1<sup>ST</sup> WEEK.
- CLUSTER LEVEL MATHS OLYMPIAD 2<sup>ND</sup> WEEK.
- STATE LEVEL MATHS OLYMPIAD 22<sup>ND</sup> DECEMBER AT RASHMI (CHITTORGARH) CLUSTER 7
- PRE-BOARD PAPER FORMATION BY SUBJECT TEACHERS ACCORDING TO CBSE(4<sup>TH</sup> WEEK)
- COMPLETION OF SYLLABUS OF BOARD CLASSES.
- ASSIGNMENTS TO STUDENTS FOR WINTER VACATION.
- INTER HOUSE CLAY MODEL COMPETITION 3<sup>RD</sup> WEEK.
- INTER HOUSE FUN GAMES 4TH WEEK.

ALL CBSE RELATED CIRCULARS MUST BE FOLLOWED AS PER THE CBSE DIRECTIVES.

# 12

For **STAFF**

08:30 AM to 04:30 PM

## SCHOOL TIMINGS

**Class 1 to 5**

09:00 AM to 02:30 PM

**Class 6 to 12**

09:00 AM to 03:30 PM





# Swami Vivekanand

Government Model School

DECEMBER 2025





# JANUARY 2026

Holidays will be according to SHIVIRA Calendar and  
Govt. of Rajasthan Calendar

## CELEBRATIONS.

- NATIONAL YOUTH DAY, SWAMI VIVEKANANDA JAYANTI, CAREER DAY 12<sup>TH</sup> JANUARY.
- MAKAR SAKRANTI, PONGAL 14<sup>TH</sup> JANUARY.
- NETAJI SUBHASH CHANDRA BOSE JAYANTI (RASHTRIYA PARAKRAM DIWAS) 23<sup>RD</sup> JANUARY.
- BASANT PANCHAMI 23<sup>RD</sup> JANUARY.
- NATIONAL GIRL CHILD DAY 24<sup>TH</sup> JANUARY
- NATIONAL VOTER'S DAY 25<sup>TH</sup> JANUARY.
- REPUBLIC DAY CELEBRATION 26<sup>TH</sup> JANUARY.
- SHAHEED DIWAS(NATIONAL CLEANLINESS DAY) 30<sup>TH</sup> JANUARY (2 MINUTES SILENCE PRAYER AT 11:00 AM MUST BE OBSERVED)
- YOUTH WEEK MUST BE CELEBRATED FROM 6<sup>TH</sup> JANUARY TO 12<sup>TH</sup> JANUARY.

## OFFICE WORK

- PTA, SMC, SDMC MEETING 26<sup>TH</sup> JANUARY.

## ACTIVITIES

- 3<sup>RD</sup> PERIODIC TEST/ASSESSMENT EXAM. 2<sup>ND</sup> WEEK.
- SCHOOL LEVEL ENGLISH DRAMA COMPETITION 3<sup>RD</sup> WEEK.
- CLUSTER LEVEL ENGLISH DRAMA COMPETITION 4<sup>TH</sup> WEEK.
- STATE LEVEL ENGLISH DRAMA COMPETITION 5<sup>TH</sup> WEEK AT RAJSAMAND, (RAJSAMAND) CLUSTER 13
- SUBJECT WISE WEEKLY TEST FOR BOARD CLASSES.
- PRE-BOARD EXAM. X AND XII (2<sup>ND</sup> WEEK AND 4<sup>TH</sup> WEEK)
- MOCK PRACTICAL CLASS X, XII.
- CBSE PRACTICALS AS PER BOARD DIRECTION.
- CLASS 1<sup>ST</sup> TO 8<sup>TH</sup> INTER SECTION, QUIZ (ENGLISH, HINDI) 1<sup>ST</sup> WEEK.
- CLASS 1<sup>ST</sup> TO 8<sup>TH</sup> INTER SECTION, QUIZ (MATHS) 2<sup>ND</sup> WEEK.
- CLASS 1<sup>ST</sup> TO 8<sup>TH</sup> INTER SECTION, QUIZ (SCIENCE) 3<sup>RD</sup> WEEK.
- CLASS 1<sup>ST</sup> TO 8<sup>TH</sup> INTER SECTION, QUIZ (SST) 4<sup>TH</sup> WEEK.
- 3<sup>RD</sup> EXPOSURE CUM EXCURSION VISIT LOCAL.

ALL CBSE RELATED CIRCULARS MUST BE FOLLOWED AS PER THE CBSE DIRECTIVES.

S	M	T	W	T	F	S
				1	2	3
4	5	6	7	8	9	10
11	12	13	14	15	16	17
18	19	20	21	22	23	24
25	26	27	28	29	30	31

# 1

**For STAFF**

**08:30 AM to 04:30 PM**

## SCHOOL TIMINGS

**Class 1 to 5**

**09:00 AM to 02:30 PM**

**Class 6 to 12**

**09:00 AM to 03:30 PM**



# Swami Vivekanand

Government Model School

JANUARY 2026





# FEBRUARY 2026

Holidays will be according to SHIVIRA Calendar and Govt. of Rajasthan Calendar

## CELEBRATIONS.

- NATIONAL DEWORMING DAY 10<sup>TH</sup> FEB.
- CHHATRAPATI SHIVAJI JAYANTI 19<sup>TH</sup> FEB.
- INTERNATIONAL MOTHER LANGUAGE DAY, RAMKRISHNA JAYANTI 21<sup>ST</sup> FEB.
- SCOUT AND GUIDE DAY 22<sup>ND</sup> FEB.
- NATIONAL SCIENCE DAY 28<sup>TH</sup> FEB.

## OFFICE WORK.

- HEALTH CHECKUP OF STUDENTS AND RECORD UPDATION.
- PTA, SMC, SDMC MEETING ON AMAVASYA.
- ADVERTISEMENT FOR ADMISSION PROCESS.

## ACTIVITIES.

- COMPLETION AND REVISION OF SYLLABUS.
- SUBJECT WISE WEEKLY TEST FOR BOARD CLASSES.
- SCIENCE PRACTICAL PREPARATIONS.
- CBSE PRACTICALS AS PER BOARD DIRECTION.
- RESULT ANALYSIS PRE-BOARD.
- COMMUNITY AWARENESS PROGRAMME REGARDING SOCIAL ISSUES 1<sup>ST</sup> WEEK.
- GUEST LECTURE ON POLICE SYSTEM, ROAD SAFETY 2<sup>ND</sup> WEEK.
- INTER SECTION QUIZ SCIENCE, MATH 3<sup>RD</sup> WEEK.
- GUEST LECTURE BY SOCIAL EMINENT PERSONALITY 4<sup>TH</sup> WEEK.
- SPELL BEE (SPELLING COMPETITION).

**ALL CBSE RELATED CIRCULARS MUST BE FOLLOWED AS PER THE CBSE DIRECTIVES.**

S	M	T	W	T	F	S
1	2	3	4	5	6	7
8	9	10	11	12	13	14
15	16	17	18	19	20	21
22	23	24	25	26	27	28

# 2

## SCHOOL TIMINGS

**For STAFF**

**08:30 AM to 04:30 PM**

**Class 1 to 5**

**09:00 AM to 02:30 PM**

**Class 6 to 12**

**09:00 AM to 03:30 PM**

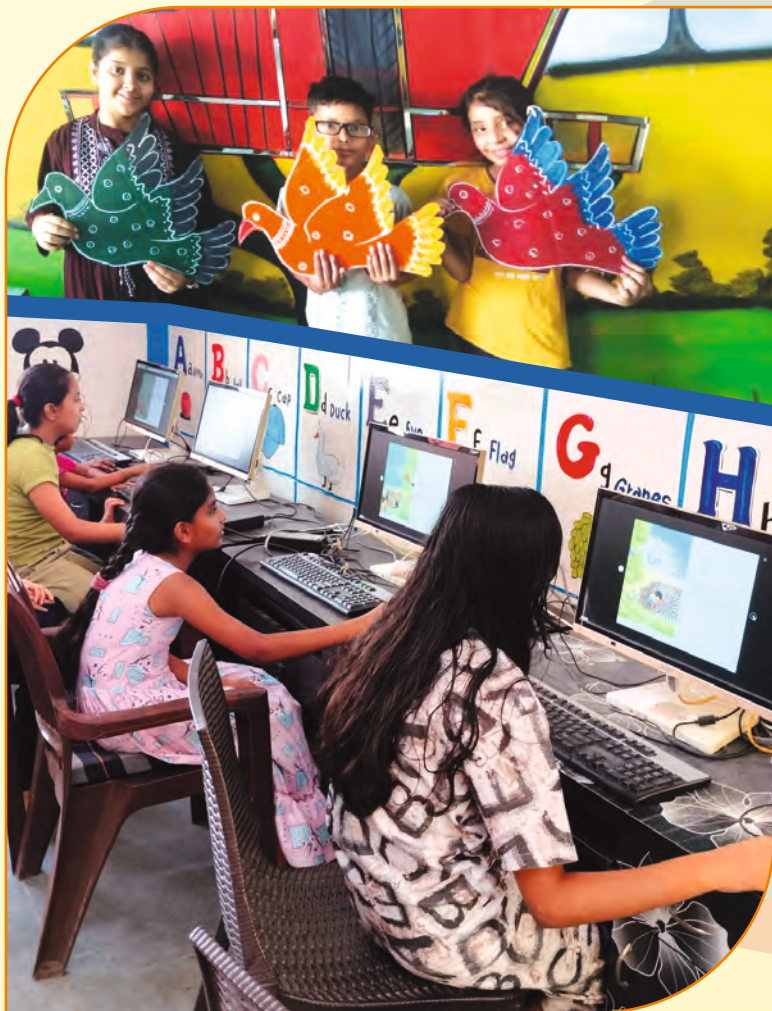




# Swami Vivekanand

Government Model School

FEBRUARY 2026





# MARCH 2026

S	M	T	W	T	F	S
1	2	3	4	5	6	7
8	9	10	11	12	13	14
15	16	17	18	19	20	21
22	23	24	25	26	27	28
29	30	31				

# 3

**For STAFF**

**08:30 AM to 04:30 PM**

## SCHOOL TIMINGS

**Class 1 to 5**

**09:00 AM to 02:30 PM**

**Class 6 to 12**

**09:00 AM to 03:30 PM**

**Holidays will be according to SHIVIRA Calendar and Govt. of Rajasthan Calendar**

### CELEBRATIONS.

- INTERNATIONAL WOMEN'S DAY 8<sup>TH</sup> MARCH.
- WORLD CONSUMER DAY 15<sup>TH</sup> MARCH.
- RAJASTHAN DIWAS 30<sup>TH</sup> MARCH.

### OFFICE WORK.

- LOCAL EXAMINATION PREPARATION.
- PRINTING OF STUDENTS AND TEACHERS DIARY.
- PLANNING OF NEXT SESSION.
- DECLARATION OF RESULTS WITH PTA 31<sup>ST</sup> MARCH.
- CLOSING ACCOUNTS FOR THE FINANCIAL YEAR.
- PREPARE LOCAL RESULT 4<sup>TH</sup> WEEK OF MARCH.
- SMC, SDMC MEETING 4<sup>TH</sup> WEEK OF MARCH.

### ACTIVITIES.

- SESSION ENDING EXAMS (1 - 8, & 9, 11).
- RESULT DECLARATION (CLASS 1-8, & 9, 11) ON 31<sup>ST</sup> MARCH.

### SOME IMPORTANT CBSE RELATED WEBSITES.

- [www.cbse.nic.in](http://www.cbse.nic.in)
- [www.cbseacademic.nic.in](http://www.cbseacademic.nic.in)

### SOME IMPORTANT RCScE RELATED EMAIL ID.

- [modelschoolst@gmail.com](mailto:modelschoolst@gmail.com)

**CBSE AFFILIATION EXTENSION FEES MUST BE SUBMITTED BEFORE 31<sup>ST</sup> MARCH.**  
**ALL CBSE RELATED CIRCULARS MUST BE FOLLOWED AS PER THE CBSE DIRECTIVES.**

## State level Activities and Events for Session 2025-26

S.N.	Name of Activity	Month	Block where to be held	Cluster No.	Remarks
1	DRAWING-PAINTING AND ART & CRAFT COMPETITION.	May 2025	Talera (Bundi)	1	
2	FOLK DANCE (GROUP) AND FOLK SONG (SOLO)	JULY 2025	Pokhran (Jaisalmer)	5	
3	SCIENCE EXHIBITION	Sep. 2025	Ghatol , (Banswara)	3	
4	SOCIAL SCIENCE EXHIBITION	Oct. 2025	Rani (Pali)	12	
5	EXTEMPORE (ENGLISH & HINDI)	Nov. 2025	Dausa (Dausa)	8	
6	MATHS OLYMPIAD	Dec. 2025	Rashmi (Chittorgarh)	7	
7	ENGLISH DRAMA COMPETITION	Jan. 2026	Rajsamand (Udaipur)	13	
8	BAND COMPETITION	To be decided by RCScE			
9	YOGA OLYMPIAD	To be decided by RCScE			



# Swami Vivekanand

Government Model School

MARCH 2026





# Girl's Hostel





# PRIMARY WING



**Rajasthan Council of School Education**

Second Floor, Block-5, Dr. Radha Krishnan Shiksha Sankul, JLN Marg, Jaipur-302017

E-mail : [modelschoolest@gmail.com](mailto:modelschoolest@gmail.com)